



Leading the Way in High-Performance
Building Envelopes with

CENTRIA International

PGF Global Distribution Sdn Bhd, a sister company to PGF Insulation Sdn Bhd, offers a diverse range of high-performance building solutions. Together with CENTRIA International, PGF Global Distribution provides state-of-the-art insulated wall metal panels and other innovative architectural products.

CENTRIA International's DSR-J panels are primarily designed for exterior wall applications where both performance and design aesthetics are crucial. Ideal for commercial and industrial buildings, these panels offer a composite structure made up of two layers of metal hot-pressed onto a fire-resistant mineral wool core. This combination ensures superior fire resistance, thermal insulation, and durability.

The innovative DSR-J panels deliver exceptional performance in harsh environments while offering cost-effective solutions for milder conditions. Renowned for their design flexibility for various building facades, these panels can be custom-curved and installed vertically, horizontally, or in running bond patterns. They are available in both steel and aluminium options.

STRUCTURAL CHARACTERISTIC

Seamless Fastening

Designed with a patented "J-section" hook for concealed fasteners, resulting in air and water-tight seals.

Customization Options

Available in a wide range of thicknesses, up to 200mm, with various metal skin options such as prepainted steel (aluminum) coil, stainless steel, titanium zinc, anodized aluminum substrate, and more.

Suitable for Malaysian building

DSR-J metal liners are specially designed to act as vapor barrier and are highly effective in tropical environment.

Interlocking Design

The interlocking feature design enhances airtightness and strength, delivering a robust building enclosure for improved energy efficiency and durability.

Extensive Colour Palette

Extensive standard colour palette (including RAL & CBCC systems), with options in micas, metallics, and various gloss levels.



Horizontal Installation

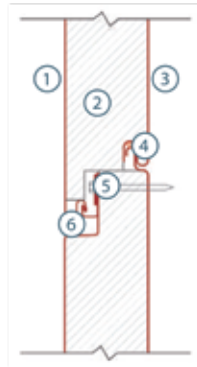


Vertical Installation



COMPONENTS

- ① Durable Exterior Metal Skin
- ② Fireproof Mineral Wool Core
- ③ Durable Interior Metal Skin
- ④ Factory Applied Concealed Sealant
- ⑤ Concealed Clips and Fasteners
- ⑥ Pressure-equalized J-joint



PERFORMANCE HIGHLIGHT

Superior Aesthetics

Includes curved panels, seamless corners, vertical panels, and a wide selection of colors.

Fire Safety

Certified as fire-resistant by local and international accreditations

Enhanced Durability

Panels are designed for air and water tightness, have a special tenon structure, and utilises fire-resistant mineral wool for thermal efficiency.

Optimized Energy Efficiency

Optimizing energy efficiency to bring down Power Usage Effectiveness (PUE) rating is the key to cost saving, especially for data centers.

Generally data centers in Malaysia have a PUE rating of 1.4 to 1.8, whereas industry leader like Google achieved PUE rating of 1.06-1.10 by lowering energy consumption, minimizing maintenance and delivering long-term financial benefits to data centers.

Centria panels significantly improve **Power Usage Effectiveness (PUE)** especially for data centers, contributing to reduced energy consumption and cost savings. Studies shown that a PUE reduction of 0.1 can have a saving of approximately RM3500 per rack/year.

TECHNICAL SPECIFICATIONS

Criteria	Specification
Panel thickness	50mm to 200mm
Panel module width	Stepless module from 300mm – 1,200mm
Panel length	600mm – 12,000mm
Core material	Fire-resistant mineral wool with density of 120kg/m ³ - 140kg/m ³
Standard reveal	13mm
Thickness of outer metal skin	<ul style="list-style-type: none"> • Skin thickness (for pure surface application): ≥0.8mm • Skin thickness (for embossed or microwaved surface): ≥0.6mm (Steel), Aluminum 0.9mm and above

*For comprehensive technical details on DSR-J panels, please refer to the Technical Data Sheet or contact the PGF Global Distribution team. Our support team is dedicated to providing tailored solutions to meet the specific needs of your project.

PROJECT HIGHLIGHT



DSR-J for RADICI GROUP



DSR-J for Yinglian Metallic



DSR-J for China Mobile Data Center



DSR-J for J&T Baoying Logistics project

ACCREDITATIONS



BS 476: Part 6: 1989 + A1:2009
BS 476: Part 7:1997
Certification No: FL 000219



TECHNICAL DATA SHEET

Product Overview

- The CENTRIA International DSR-J panels is a patented design, built for exterior wall applications, combining performance, quality and superior aesthetics.
- The panels consist of two metal layers permanently hot-pressed onto a fire-resistant mineral wool core.
- CENTRIA International DSR-J can be installed both horizontally and vertically, with customization available for widths, lengths, thicknesses, and joint requirements.
- Certified to meet international standards for fire resistant, insulation, waterproofing, and decorative features.

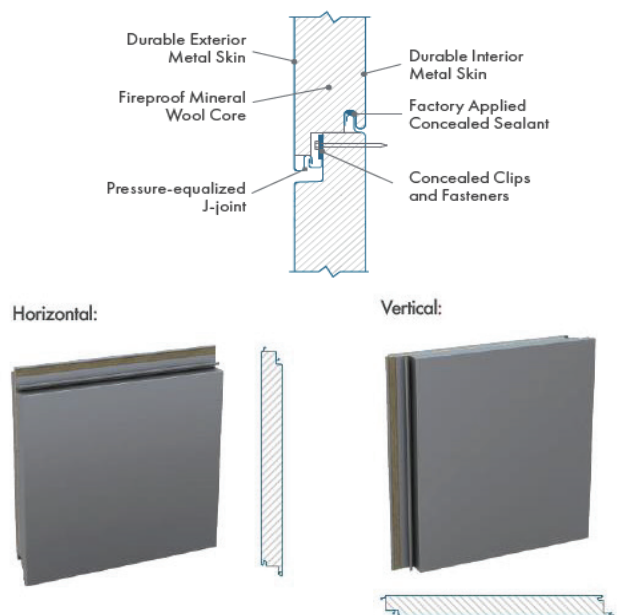
Panels Material

Metallic-Coated Steel Face Sheet	<ul style="list-style-type: none"> Zinc-coated (galvanised) steel sheet Face sheet thickness: 0.6 - 1.0 mm, Smooth/ embossed surface
Aluminum Face Sheet	<ul style="list-style-type: none"> Face sheet thickness 0.8 - 1.0 mm Smooth/ embossed surface
Exposed Coil-Coated Finish (Choose One)	<ul style="list-style-type: none"> Fluoropolymer Two-Coat System Fluoropolymer Two-Coat Thick Film System Fluoropolymer Three-Coat High-Build System Fluoropolymer Two-Coat Mica System Fluoropolymer Three-Coat Metallic System Fluoropolymer Two-Coat Corrosion and Abrasion Resistant System Urethane Two-Coat Corrosion and Abrasion Resistant System Fluoropolymer Three Coat System
Metallic-coated Steel Liner Sheet	<ul style="list-style-type: none"> Zinc-coated steel sheet Thickness 0.5 - 0.6 mm Smooth/ embossed surface
Mineral Wool Insulation Core	<ul style="list-style-type: none"> Standard density: 140 kg/m³, non-combustible, water-repellent, PH-balanced, non-corrosive
Bonding Adhesive	<ul style="list-style-type: none"> High bonding strength of ≥60 kPa, stable under extreme temperatures.

Technical Information

Thermal Conductivity of Mineral Wool	≤ 0.048 W/(m·K)
Fire Resistance Rating	Class A fire resistance
Fire Resistance Limit	≥ 90 minutes (100mm thickness)
Bonding Strength	≥ 0.19 MPa
Peel Performance	100%
Bending Bearing Capacity	≥ 0.8 kN/m ²
Air Infiltration Performance	ASTME283-04 <0.01 cfm/ft ² / <0.1 L/s/m ² (Liner/sec)
Water Tightness Performance	ASTME331-00 10.65 psf (pound/sqft) 510 pa (pascal)

Horizontal Application



Unique Technical Advantages:

100% Dry Seal: The return face on panel ends eliminates the need for silicone, ensuring a cleaner and more efficient seal.

Optimal Insulation: Continuous mineral wool at panel joints enhances thermal performance.

Smooth Finish: Concealed fastening clips and screws provide a sleek and seamless appearance.

Pressure-Equalized Air Space: A double-joint interface featuring a unique "J" hook design enhances structural integrity and air pressure balance.

High Flatness: The hot pressing technique minimizes waviness, ensuring a consistently smooth surface.

Stronger Bonding: A precise and consistent adhesive application process improves durability and reliability.

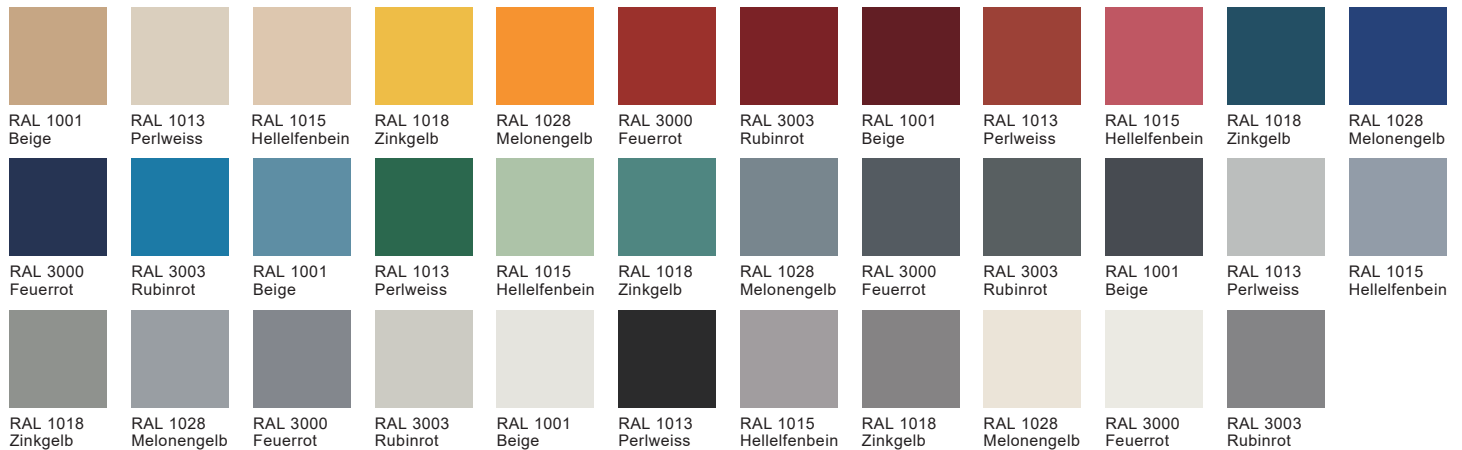
Thermal Performance

Product	Thickness (mm)	Thermal Conductivity Value W/(m.K)	Max. U Value W/(m ² .K)	Min. R Value (m ² .K)/W
DSR50	50	0.048	0.85	1.18
DSR80	80		0.56	1.79
DSR100	100		0.46	2.17
DSR120	120		0.38	2.63
DSR150	150		0.31	3.23
DSR175	175		0.27	3.80
DSR180	180		0.25	3.90
DSR200	200		0.24	4.32

FINISHING SELECTION

Classic Series

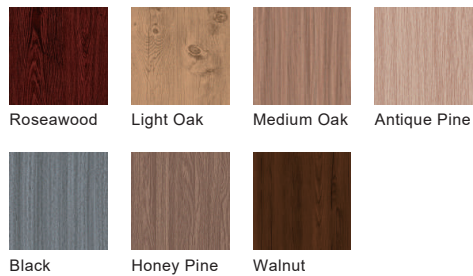
We love supporting our clients as they select the perfect colors for their projects. From standard shades to custom-tailored hues, we go the distance to ensure that the finish is as stunning as the design by providing color samples and expert guidance from our technical team. Based on the RAL® Color System*, our Classic Series' vast array of colors beautify exterior and interior projects.



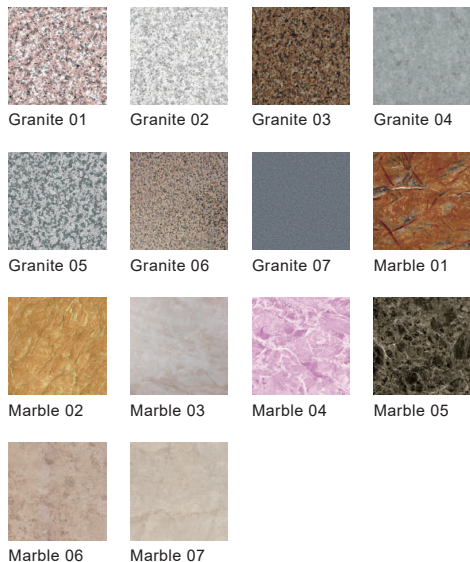
Special Series

The innovative, high-performance custom colors in our Special Series make unique finishes possible. From pre-finished decorative Wood and Stoneware options that accurately and cost-effectively simulate expensive natural finishes, to our matte finish that features a subtle, aggregate stucco texture, and to the custom color requests that come from the brilliant architects and designers with whom we work, we love to help provide color and coating solutions that make building exteriors and interiors truly phenomenal.

Wood Decor



Stoneware

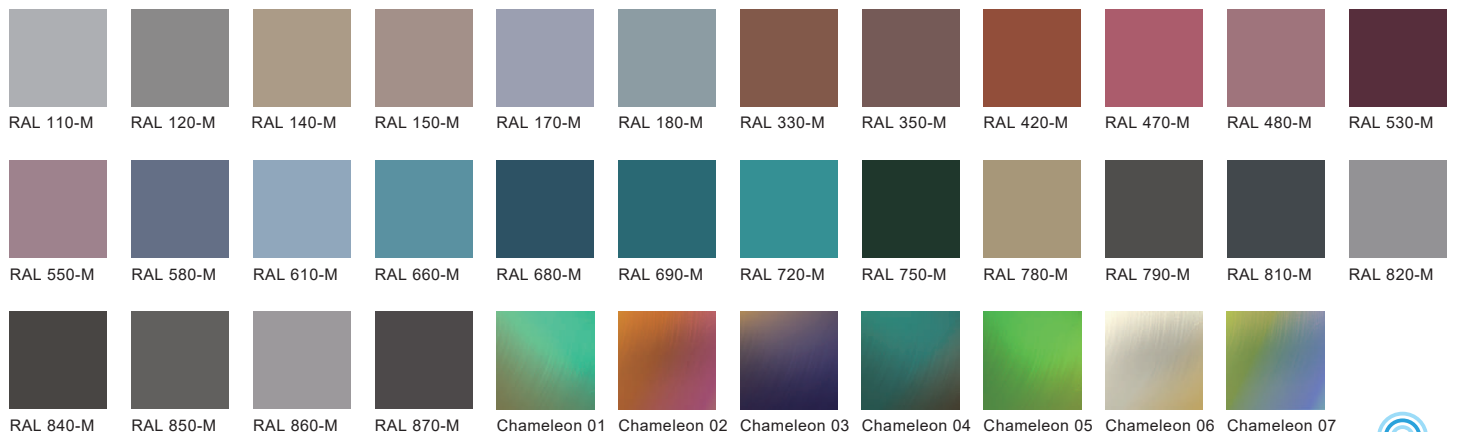


Custom Finishes



Radiant Series

Our Radiant Series takes coating innovation and design inspiration to the next level by making it possible to create walls that feature dazzling micas, metallics, and our continuous, iridescent color-shifting gradients. Below please find a representative selection of popular options.



Please kindly note that all colors shown are for preliminary selection and may vary from the actual material. For sample chips or to learn more about our Colors and Coatings, please do not hesitate to contact your **PGF Global Distribution** Sales Manager.

*Established in 1925, RAL is the leading color standard system for professional architects and designers. The RAL Color System is administered by RAL Deutsches Institut für Gütesicherung und Kennzeichnung e.V., an independent, non-profit organization.